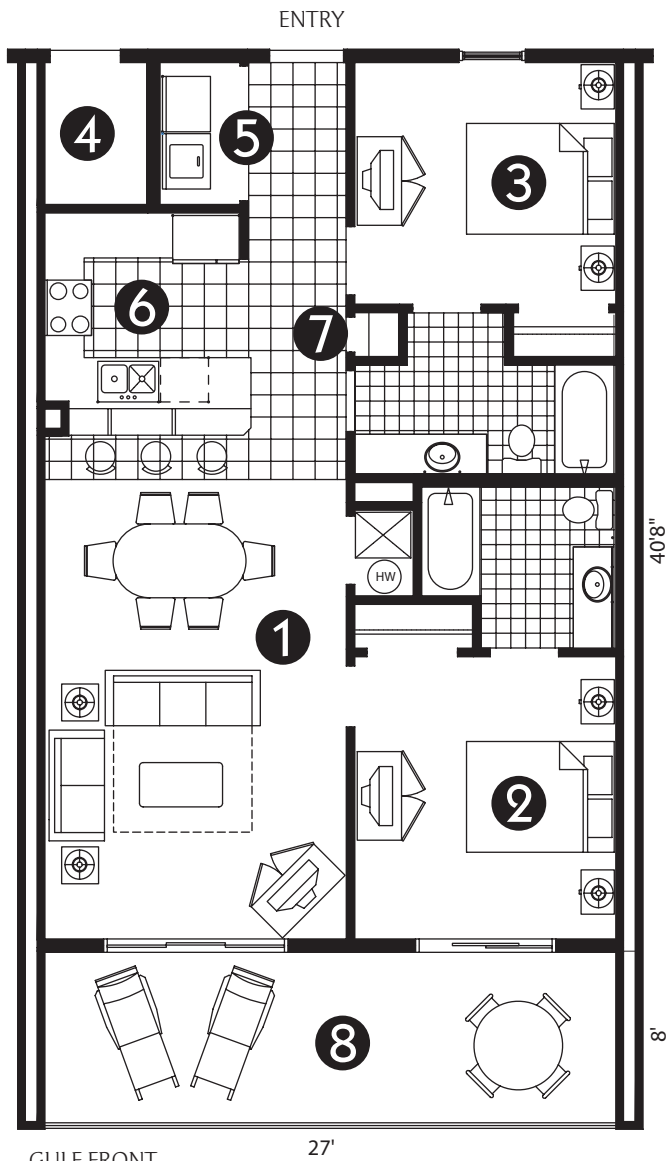


# Plans for Luxury

Each unit will have custom cabinetry in the kitchen with granite countertops. The foyers, kitchens, bathrooms, and laundry rooms are tiled. Each unit is equipped with upgraded appliances. Nine-foot ceilings enhance the ocean views from the living/dining areas as well as from the master bedrooms. These rooms also open onto oversized Gulf-front terraces. The corner units offer additional windows and wraparound terraces to maximize the views.



## PLAN C1

INTERIOR UNIT

TOTAL—1,314 SQ. FT.

LIVING—1,098 SQ. FT.

TERRACE—216 SQ. FT.

### 2 BEDROOMS, 2 BATHS

- |                                    |            |
|------------------------------------|------------|
| 1. LIVING/DINING —13'-8" X 20'9"   | 5. LAUNDRY |
| 2. MASTER BEDROOM — 11'10" X 12'9" | 6. KITCHEN |
| 3. BEDROOM — 11'10" X 11'          | 7. CLOSET  |
| 4. OWNER'S EXT. STORAGE            | 8. TERRACE |

#### ALL UNITS INCLUDE:

- Nine-foot ceilings (except where dropped)
- Raised 6-panel interior doors
- Oversize open terraces
- Pre-wired cable television and telephone outlets
- Fire protection: sprinkler system and smoke detectors
- Crown molding in entry, hallway, living/dining area, kitchen, and master bedroom
- Full-size hot water heaters
- Full-size washers and dryers
- Terrace access from living/dining and master bedrooms
- Flooring: tile (where shown) and carpet

#### ALL KITCHENS INCLUDE:

- Custom cabinetry
- Granite countertops
- Ceramic tile floors
- Side-by-side refrigerators/freezers
- Electric ranges: conventional ovens with radiant cooktops
- Built-in microwave ovens
- Garbage disposals
- Dishwashers

Need not be built.