

App. Bx. 22 PG 170

INTERIOR OF UNITS ARE PRIVATE ELEMENTS
BALCONIES ARE LIMITED COMMON ELEMENTS

THE UNDERSIGNED, DAVID LINDSEY, A REGISTERED ARCHITECT IN THE STATE OF ALABAMA, REGISTRATION NUMBER 2327, PURSUANT TO SECTION 36-2A-200, CODE OF ALABAMA, WITH HEREBY CERTIFY THAT THE DESIGN, CONSTRUCTION, AND CONSTRUCTION OF THIS UNIT AND THE BALCONY ARE IN ACCORDANCE WITH THE REGULATIONS OF CONDOMINIUM OF THE GRAND CARIBBEAN, A CONDOMINIUM. CERTAIN ALL REGULATIONS REFERRED BY SAID SECTION 36-2A-200, CODE OF ALABAMA, TO THE CONDOMINIUM REGULATIONS AND APPROPRIATE ORDINANCES IN SAID STATE, DETAIL TO GOVERN THE COMMON ELEMENTS, LIMITED COMMON ELEMENTS AND PRIVATE ELEMENTS OF THIS UNIT. THE COMMON ELEMENTS AND PRIVATE ELEMENTS OF THIS UNIT ARE DESCRIBED AS SET FORTH IN THE CONDOMINIUM REGULATIONS.

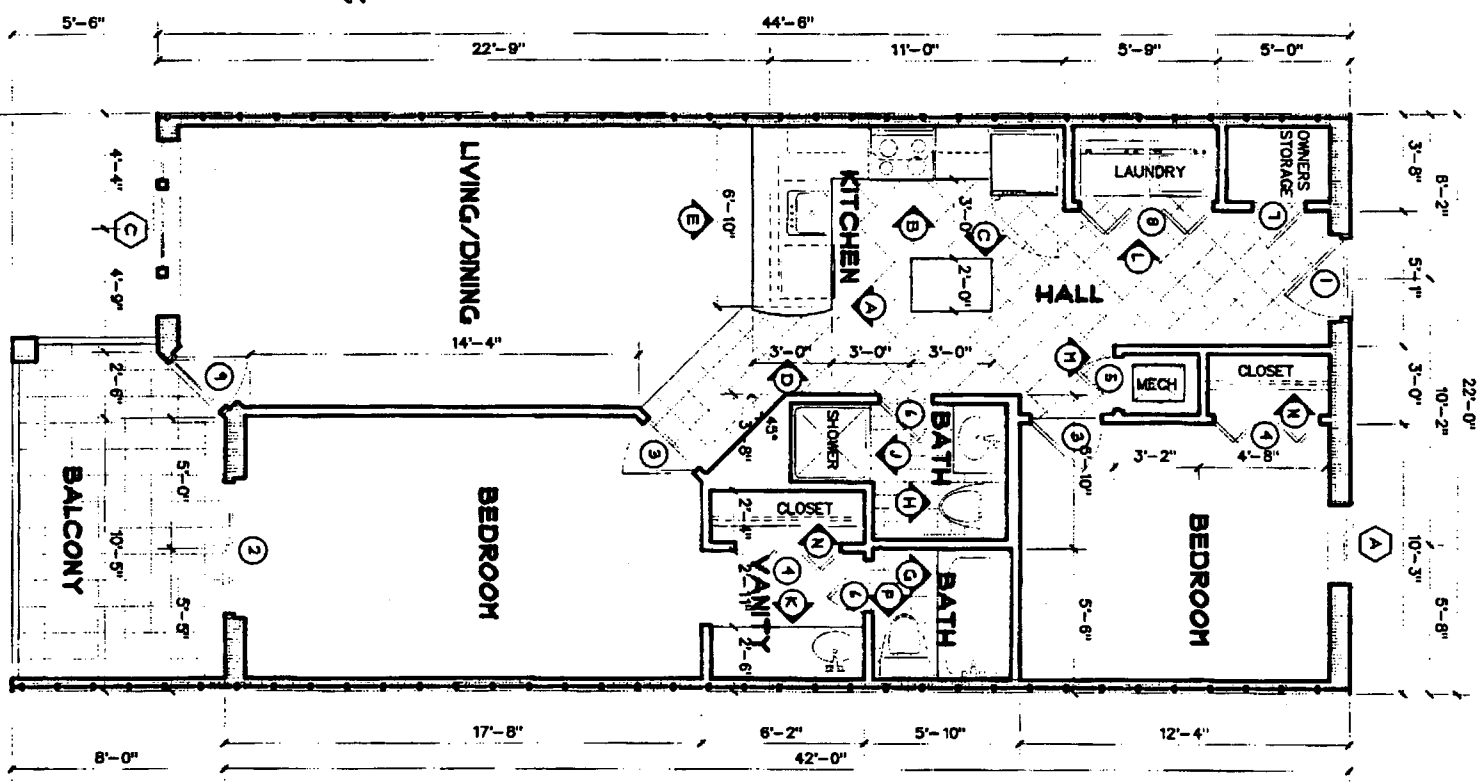
David Lindsey
ALABAMA REGISTRATION NUMBER 2327

Area: 834 sq ft

UNITS
111 211 311
114 214 314

LARGE 2 BEDROOM UNIT TYPE 'C'

SCALE 3/8" = 1'-0"



LEGEND
1 Hr. ICF Wall
ICF Wall

SHEET NO. 14 OF 17

A Multi-Family Development
The Grand Caribbean
Condominium
Orange Beach, Alabama

DAVID LINDSEY, ARCHITECT
DESIGN, PLANNING, INTERIORS
(251) 454-7213
104 RIVEROAKS DRIVE FAIRHOPE ALABAMA 36532

