

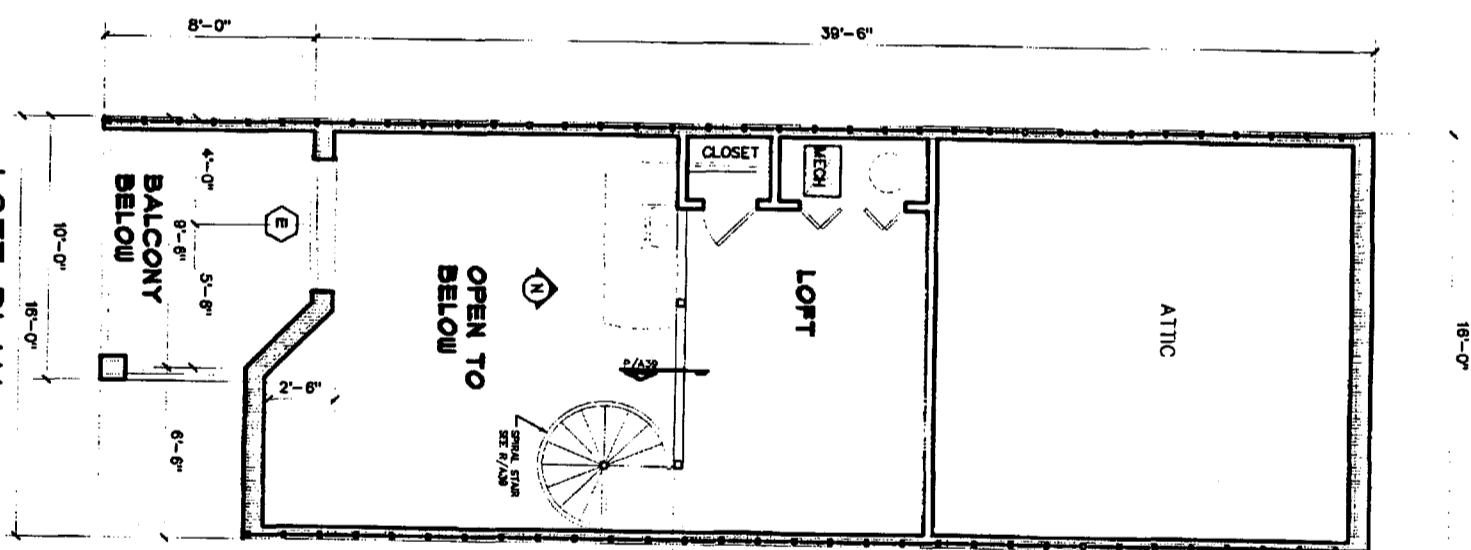
App. Bk. 22 Pg. 172

INTERIOR OF UNITS ARE PRIVATE ELEMENTS  
BALCONIES ARE LIMITED COMMON ELEMENTS

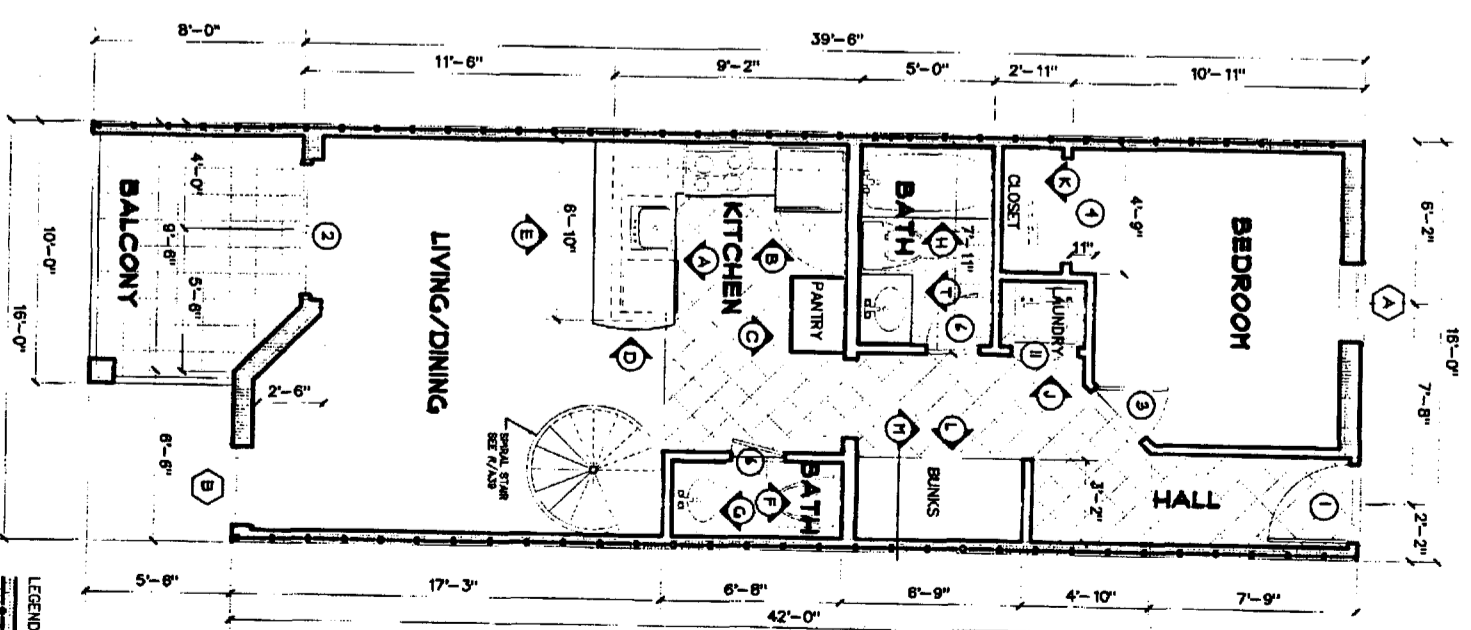
THE UNDERSIGNED, DAVID LINDSEY, A REGISTERED ARCHITECT IN THE STATE OF ALABAMA, REGISTRATION NUMBER 3527, PURSUANT TO SECTION 36-28-204, CODE OF ALABAMA, WITH HEREBY CERTIFIES THAT THE SEVEN (7) UNITS SHOWN ON THESE PLANS ARE FULLY AND ACCURATELY DEPICTED IN THE LATTER PART OF THESE PLANS AND ACCURATELY DEPICT THE LATTER PART OF THESE PLANS AND APPROXIMATE DIMENSIONS IN SEVERAL PLACES TO VERIFY EXISTING CONDITIONS AND PRIVATE ELEMENTS SHOWN THEREON AS SHOWN ON THESE PLANS AND APPROXIMATE DIMENSIONS AS SHOWN ON THESE PLANS.

ALABAMA REGISTRATION NUMBER 3527 DATE 7/2/23

LOFT LEVEL	LOFT TOTAL	Average Area			
401	402	403	404	405	406
407	408	409	410	411	412
413	414	415	416	417	418



LOFT PLAN  
SCALE 3/8" = 1'-0"



ONE BEDROOM W/ LOFT  
UNIT TYPE 'E'  
SCALE 3/8" = 1'-0"

LEGEND  
1 Hr. ICF Wall  
ICF Wall



SHEET NO. 16 OF

A Multi-Family Development  
**The Grand Caribbean**  
Condominium  
Orange Beach, Alabama

DATE: 7/2/23  
DRAWN BY: [Signature]

**DAVID LINDSEY, ARCHITECT**  
DESIGN, PLANNING, INTERIORS  
(251) 454-7213  
104 RIVEROAKS DRIVE FAIRHOPE ALABAMA 36532

