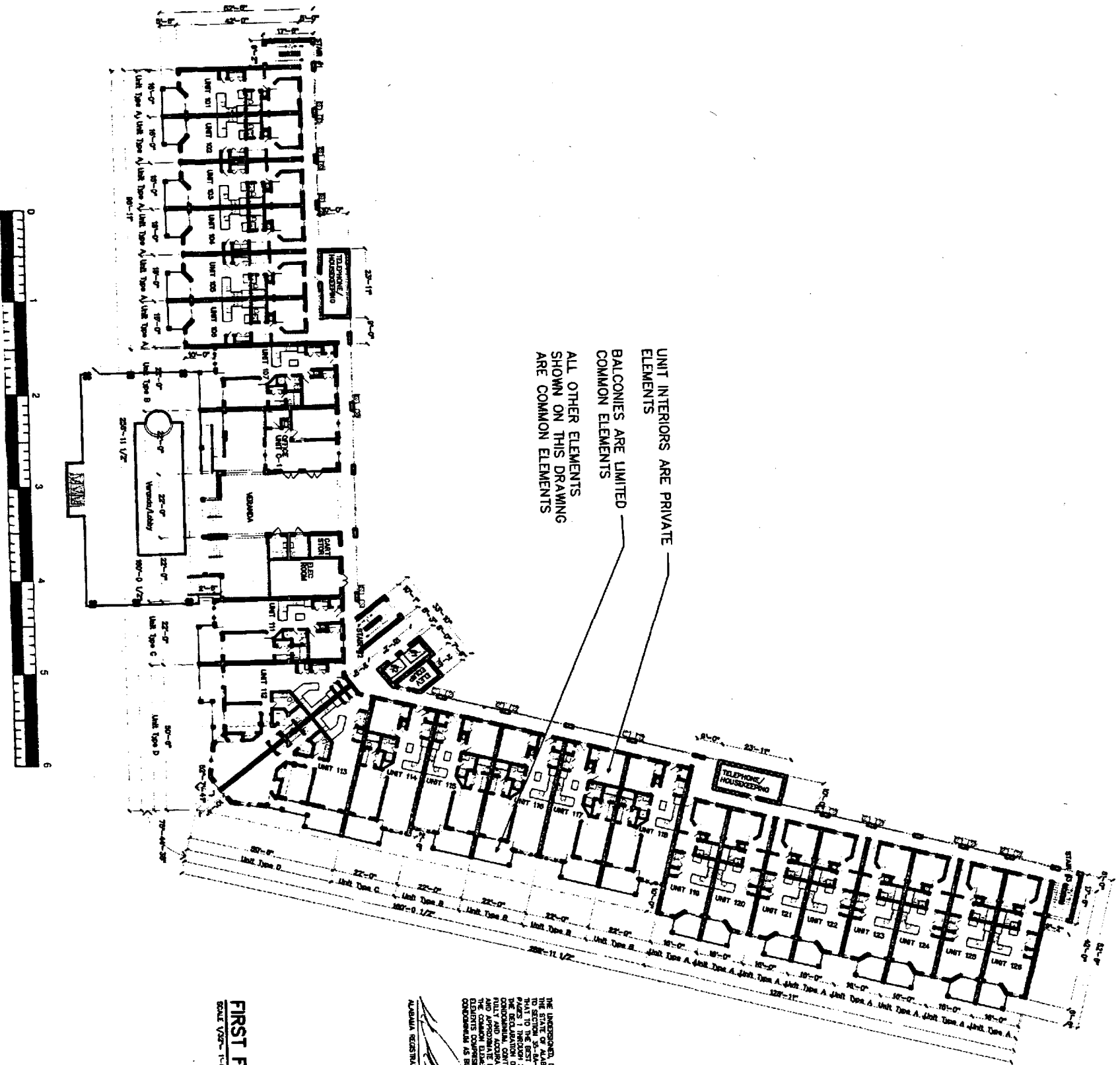


Ap. Bk aa pg. 159



UNIT INTERIORS ARE PRIVATE ELEMENTS
 BALCONIES ARE LIMITED COMMON ELEMENTS
 ALL OTHER ELEMENTS SHOWN ON THIS DRAWING ARE COMMON ELEMENTS

FIRST FLOOR PLAN
 SCALE 1/4" = 1'-0"

THE UNDERSIGNED, DAVID LINDSEY, A REGISTERED ARCHITECT IN THE STATE OF ALABAMA, REGISTRATION NUMBER 2617, HEREBY CERTIFY THAT I AM THE ARCHITECT OF RECORD FOR THE PROJECT SHOWN ON THIS DRAWING. I HAVE REVIEWED THE DRAWING AND I HEREBY CERTIFY THAT IT IS IN ACCORDANCE WITH THE REQUIREMENTS OF THE BOARD OF ARCHITECTS, AND I HEREBY CERTIFY THAT I HAVE NOT BEEN CONVICTED OF ANY CRIMINAL OFFENSES IN THE PAST TEN YEARS. I HEREBY CERTIFY THAT I HAVE NOT BEEN CONVICTED OF ANY CRIMINAL OFFENSES IN THE PAST TEN YEARS. I HEREBY CERTIFY THAT I HAVE NOT BEEN CONVICTED OF ANY CRIMINAL OFFENSES IN THE PAST TEN YEARS.

DAVID LINDSEY
 ALABAMA REGISTRATION NUMBER 2617
 DATE: 1/2/79

SHEET NO. 3 OF 3

Project 98 004

A Multi-Family Development
The Grand Caribbean
 Condominium
 Orange Beach, Alabama

DAVID LINDSEY, ARCHITECT
 DESIGN, PLANNING, INTERIORS
 (251) 454-7213
 104 RIVEROAKS DRIVE FAIRHOPE ALABAMA 36532

