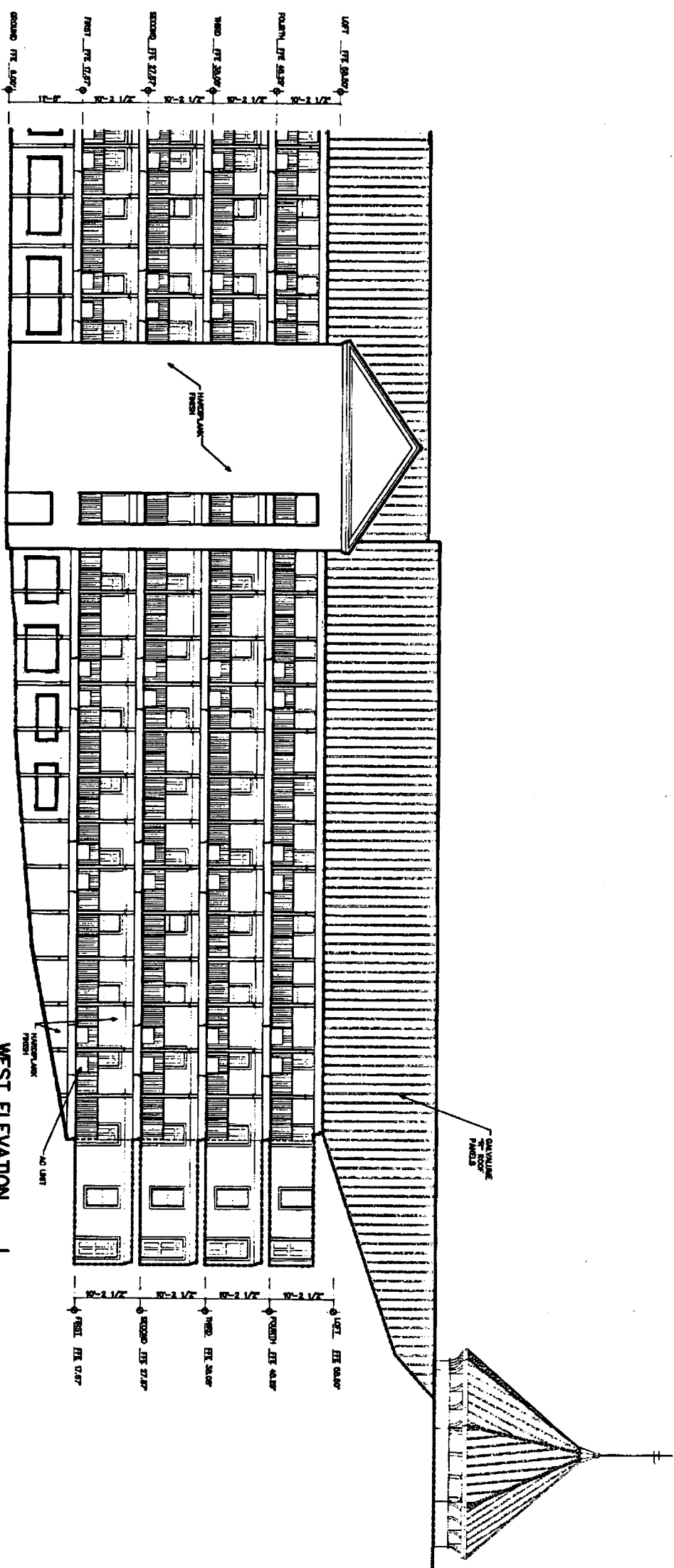
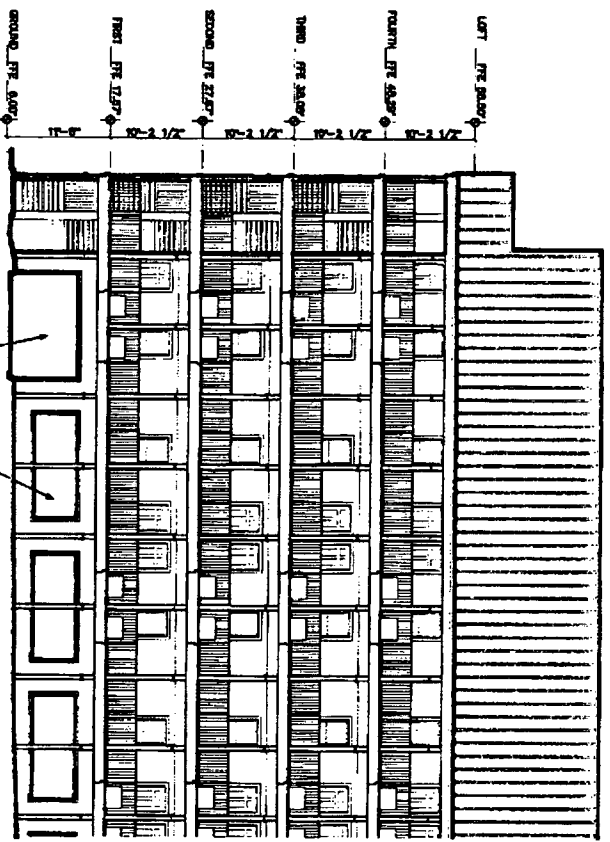


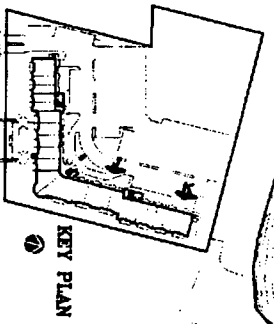
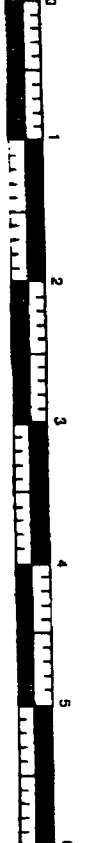
Apt. Bk. 22 pg. 147



WEST ELEVATION J  
SCALE 1/8"=1'-0"



WEST ELEVATION K  
SCALE 1/8"=1'-0"



THE UNDERSIGNED, DAVID LINDSEY, A REGISTERED ARCHITECT IN THE STATE OF ALABAMA, HEREBY CERTIFY THAT THESE PLANS TO SECTION 24-64-204, CODE OF ALABAMA, 1975, WERE PREPARED BY ME OR UNDER MY CLOSE PERSONAL SUPERVISION AND TO THE BEST OF MY KNOWLEDGE, BELIEF AND OPINION THEY COMPLY WITH ALL REQUIREMENTS OF THE CODE AND THE DECLARATION OF CONDOMINIUM OF THE GRAND CARIBBEAN, A CONDOMINIUM OWNERS ASSOCIATION INCORPORATED IN ALABAMA, AND APPROPRIATE SUBSECTIONS IN SAID DECLARATION TO ENURE THE COMMON ELEMENTS LIMITED COMMON ELEMENTS AND PRIVATE COMMONS AS SET FORTH IN SAID DECLARATION AND PRIVATE COMMONS AS SET FORTH IN SAID DECLARATION.

ALABAMA REGISTRATION NUMBER 2417 DATE 7/28/83

SHEET NO. 11 OF 07

A Multi-Family Development  
**The Grand Caribbean**  
 Condominium  
 Orange Beach, Alabama

DATE'S  
 7/28/83

**DAVID LINDSEY, ARCHITECT**  
 DESIGN, PLANNING, INTERIORS  
 (251) 454-7213  
 104 RIVEROAKS DRIVE FAIRHOPE ALABAMA 36532

