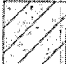
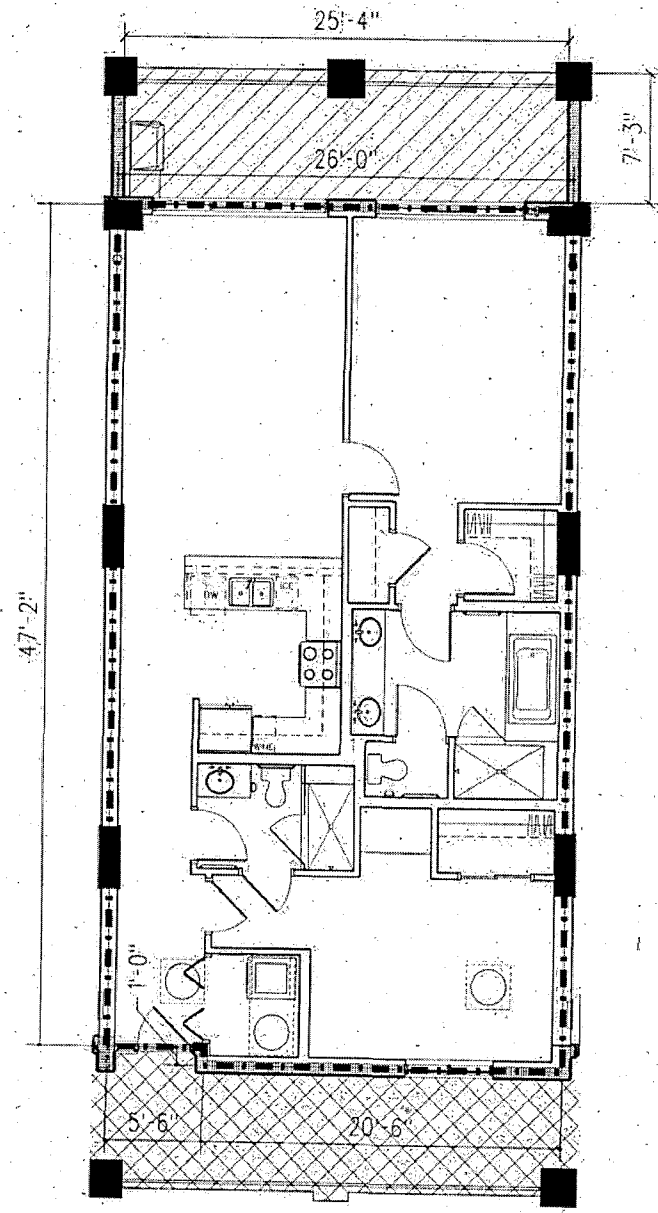
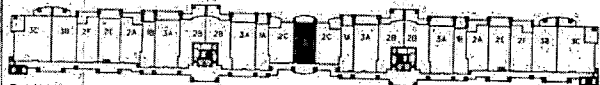
 Common Element  
 Limited Common Element

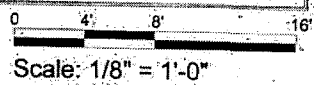


Level 9



Each Unit includes that part of the structure which lies within the following boundaries:  
 Horizontal (Upper and Lower) Boundaries. The upper horizontal boundary of each Unit shall be the plane formed by the lower surface of the sheetrock, wood framing or concrete of each ceiling, so that the drywall, lath and plaster, wallboard, ceiling tile, or other material comprising the ceiling shall constitute a portion of the Unit. The lower horizontal boundary of each Unit shall be the plane formed by the upper surface of the concrete subfloor of such unit, with the flooring constituting part of the Unit, with the flooring constituting part of the Common Elements.  
 Vertical Boundaries. With respect to walls separating the Unit from the exterior of the Building or the Unit from a Common Element such as a hallway, the perimeter or vertical boundaries of each Unit shall be the vertical plane formed by the cantilever of the wall separating the Unit from the exterior of the Building or from said Common Element. With respect to common walls between Units, the perimeter or vertical boundary of the Units served thereby shall be the centerline of such walls. The plaster, "sheetrock" or wallboard, or other material comprising the walls of the Unit, as they are extended to their intersections with each other and the upper and lower horizontal boundaries of the Unit, shall constitute a portion of the Unit.

UNIT	Suite(s)
2D.2	913
Unit Area	1,246 SF
Balcony Area	188 SF
<b>Total Area</b>	<b>1,434 SF</b>



**Levin's Bend**, a Condominium at the Wharf  
 Wharf Parkway Orange Beach, Alabama

These floor plans and the dimensions and square footage calculations shown herein are only approximations. Any Unit Owner who is concerned about any representations regarding the floor plans should do his/her own investigation as to the dimensions, measurements and square footage of his/her unit.