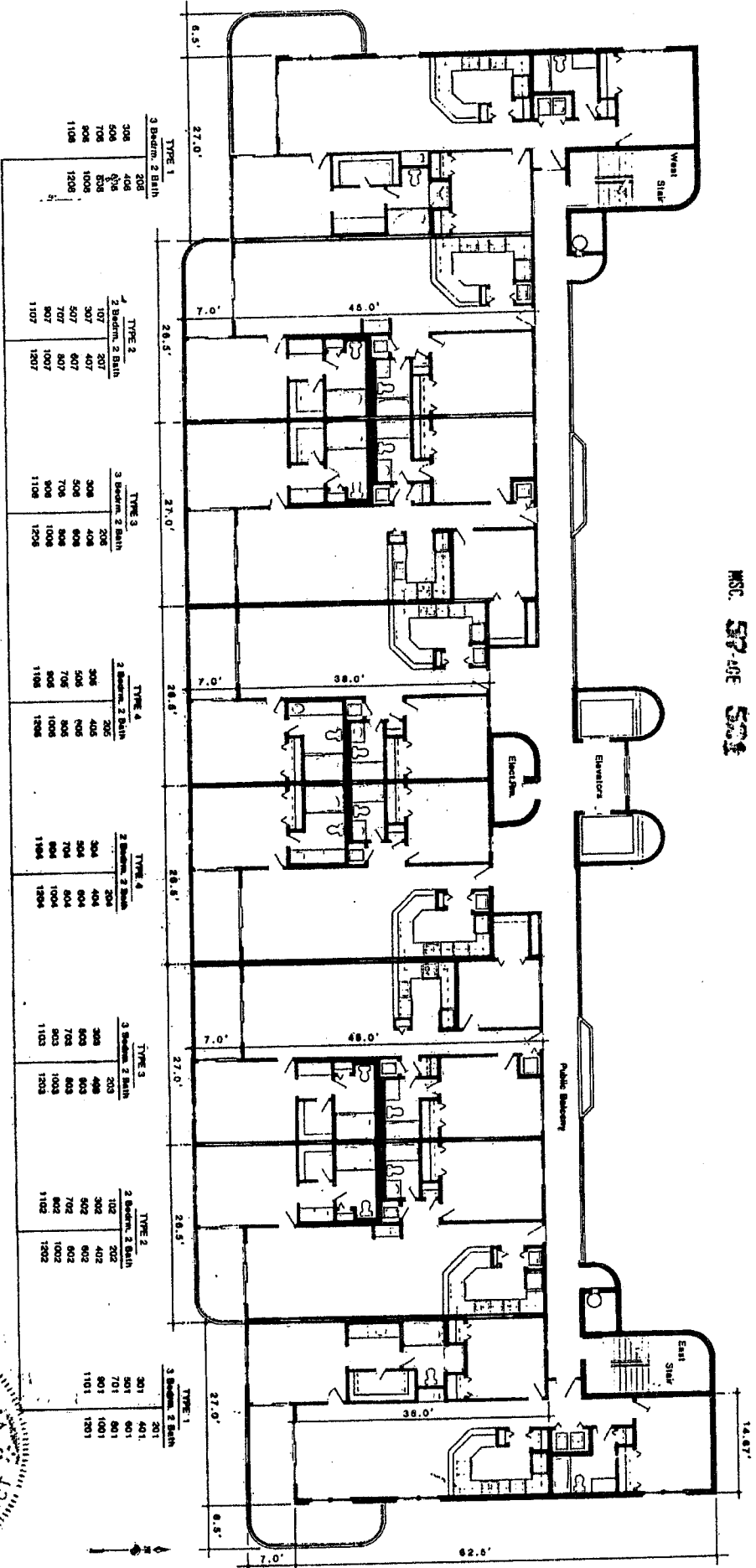


MSC 57-49E 503

EXHIBIT A



STATE OF ALABAMA, COUNTY OF BALDWIN:

T. R. R. MOORE, A REGISTERED ARCHITECT, STATE OF ALA., PURSUANT TO SECTION 35-8-8, CODE OF ALA., 1975, HEREBY CERTIFY THAT THE DRAWINGS HEREIN CONSISTING OF SHEETS NUMBERED ONE THRU ELEVEN INCLUSIVE ATTACHED TO AND MADE PART OF THE DECLARATION OF CONDOMINIUM SUMMERCHASE, TYPICALLY DEPICT A LAYOUT, LOCATION, UNIT NUMBER AND DIMENSIONS IN SUFFICIENT DETAIL TO DESCRIBE THE COMMON ELEMENTS AND PRIVATE ELEMENTS COMPOSING SUCH UNITS OF SAID SUMMERCHASE CONDOMINIUM AS BUILT.

R. R. MOORE, ARCHITECT

FLOOR TO CEILING HEIGHTS

First	18.21'	28.87'
Second	30.18'	48.80'
Third	39.88'	48.80'
Fourth	47.55'	48.80'
Fifth	56.17'	64.10'
Sixth	64.78'	72.78'
Seventh	73.41'	81.48'
Eighth	82.03'	90.12'
Ninth	90.74'	98.78'
Tenth	99.46'	107.48'
Eleventh	108.08'	116.11'
Twelfth	116.72'	124.83'

TYPICAL UNIT ABBREVS

TYPE 1	3 Bath, 2 Bath	301	401	501	601	701	801	901	1001	1101	1201	
TYPE 2	2 Bath, 3 Bath	102	202	302	402	502	602	702	802	902	1002	1102
TYPE 3	3 Bath, 2 Bath	203	403	603	803	1003	1203					
TYPE 4	2 Bath, 3 Bath	304	404	504	604	704	804	904	1004	1104	1204	

SUMMERCHASE CONDOMINIUMS

Orange Beach, Alabama

SHEET NO. 1

DATE

BY

FOR

PROJECT

NO.

SCALE

DATE

BY

FOR

PROJECT

NO.

SCALE

