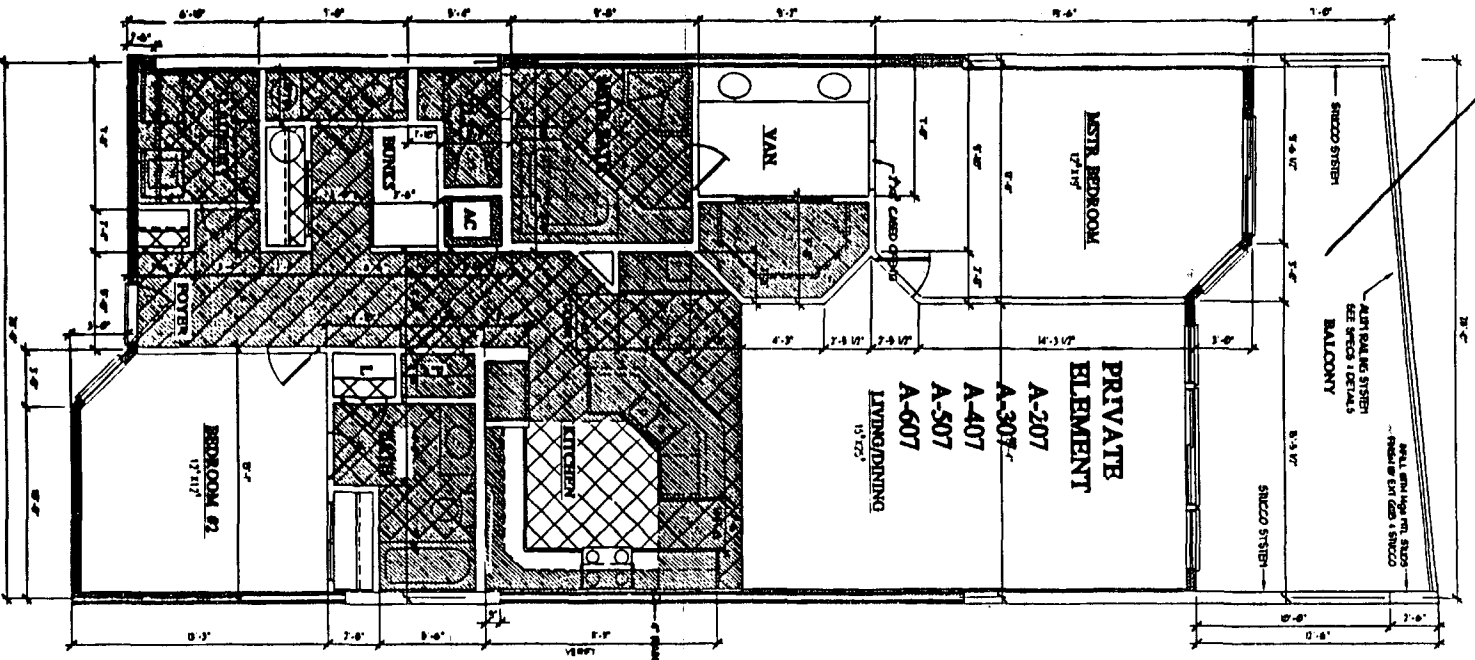


LIMITED COMMON ELEMENTS



TYP FLOOR PLAN UNIT G

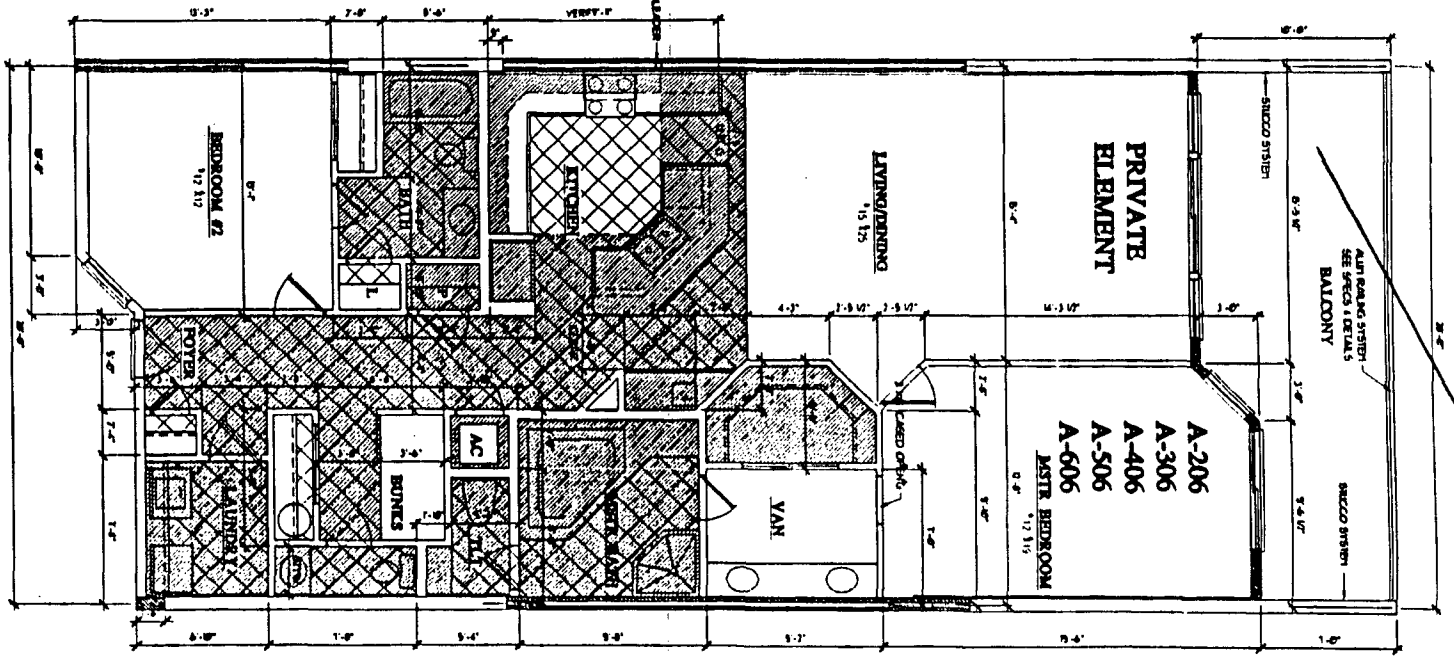
NOTE:  
ALL RESIDENTIAL UNIT BALCONIES TO BE LIMITED COMMON ELEMENT.  
ALL RESIDENTIAL UNITS TO BE PRIVATE ELEMENT.  
ALL OTHER AREAS TO BE COMMON ELEMENTS UNLESS OTHERWISE NOTED.

NOTE:  
FACE OF UNIT ENDING IN 7 IS A MIRROR IMAGE OF THE 7 UNIT ENDING IN 5.

THE UNDERSIGNED, HENRY H. HENRIS, A REGISTERED ARCHITECT IN THE STATE OF ALABAMA, REGISTRATION NUMBER 2665, PURSUANT TO SECTION 36-8A-109 CODE OF ALABAMA 1975, HEREBY CERTIFIES THAT TO THE BEST OF HIS KNOWLEDGE, BELIEFS AND CONSCIENCE, THE PLAN HEREIN IS A TRUE AND CORRECT COPY AND FAITHFUL REPRESENTATION OF THE ORIGINAL PLAN AND DRAWING AS SUBMITTED TO HIM BY THE ARCHITECT OF RECORD FOR THE PROJECT. THE UNDERSIGNED HAS REVIEWED THE PLAN AND DRAWING AND HAS FOUND IT TO BE A TRUE AND CORRECT COPY AND FAITHFUL REPRESENTATION OF THE ORIGINAL PLAN AND DRAWING AS SUBMITTED TO HIM BY THE ARCHITECT OF RECORD FOR THE PROJECT. THE UNDERSIGNED HAS REVIEWED THE PLAN AND DRAWING AND HAS FOUND IT TO BE A TRUE AND CORRECT COPY AND FAITHFUL REPRESENTATION OF THE ORIGINAL PLAN AND DRAWING AS SUBMITTED TO HIM BY THE ARCHITECT OF RECORD FOR THE PROJECT.

*H. H. Henris*  
DATE: 8/2/02  
ALABAMA REGISTRATION NUMBER 2665

LIMITED COMMON ELEMENTS



TYP FLOOR PLAN UNIT G

Instrument 678028 Page 17 of 20  
Apt Bk 22 pg 90

<p>HENRY HENRIS &amp; ASSOC., INC. ARCHITECTS ENVIRONMENTAL DESIGN</p>	<p>301 PALFORD PENSACOLA FLORIDA 32508 930 433-6981 FAX 433-5001 www.henris.com</p>	<p>THE DASH A CONDOMINIUM RESORT</p>	<p>DATE: 8/2/02 DRAWN BY: [Name] CHECKED BY: [Name] DATE: 8/2/02 REVISIONS:</p>	<p>16 SHEET</p>
--	---	--	---	---------------------

BUSINESS RECORDS CORPORATION

HENRY HENRIS & ASSOCIATES, INC.