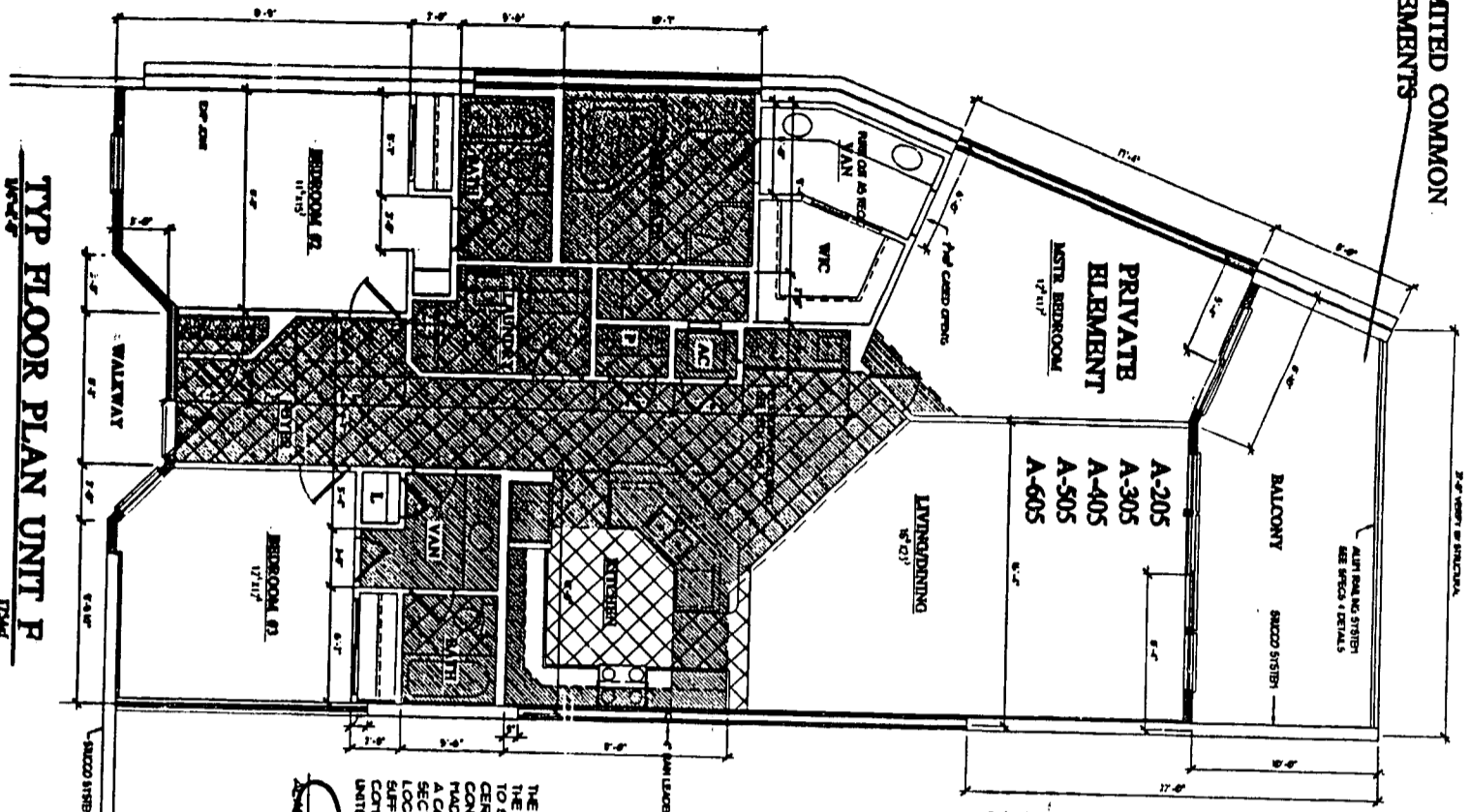


LIMITED COMMON ELEMENTS



TYP FLOOR PLAN UNIT P

NOTE:
ALL RESIDENTIAL UNIT BALCONIES TO BE LIMITED COMMON ELEMENT.
ALL RESIDENTIAL UNITS TO BE PRIVATE ELEMENT.
ALL OTHER AREAS TO BE COMMON ELEMENTS UNLESS OTHERWISE NOTED.

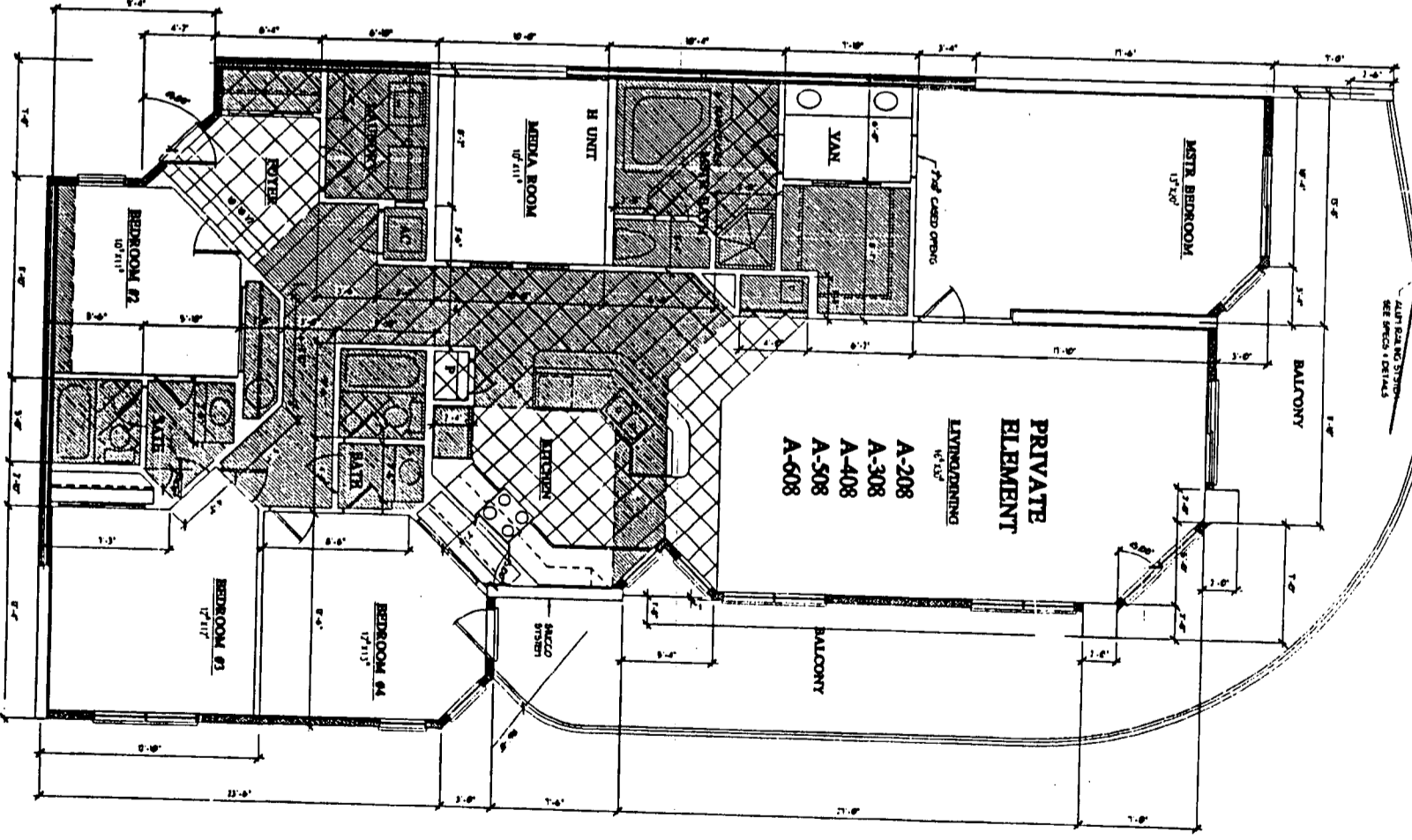
NOTE:
EACH "G" UNIT ENDING IN "7" IS A HURBOR PLACE OF THE "G" UNIT ENDING IN "6".

THE UNDERSIGNED, HENRY H. MORRIS, A REGISTERED ARCHITECT IN THE STATE OF ALABAMA REGISTRATION NUMBER 2665, PURSUANT TO SECTION 36-2-204 CODE OF ALABAMA 1975, HEREBY CERTIFY THAT THE BEST OF HIS KNOWLEDGE, BELIEF AND OPINION, THE INFORMATION IS CORRECT AND COMPLETE, AND THAT HE IS NOT PROVIDING ANY INFORMATION TO ANY OTHER PARTY OF THE REGISTRATION OF CONDOMINIUM OF THE PASS, SECTION 8117 AND 17117, ALL INFORMATION REQUIRED BY SAID LOCATIONS UNIT NUMBERS AND APPROPRIATE DIMENSIONS IN SUFFICIENT DETAIL TO ENSURE THE COMMON ELEMENTS, LIMITED COMMON ELEMENTS AND PRIVATE ELEMENTS CORRESPONDING SUCH UNITS OF THE PASS, A CONDOMINIUM AS BUILT.

H. Morris
DATE 8/22/02
REGISTRATION NUMBER 2665

© HENRY MORRIS & ASSOCIATES, INC.

LIMITED COMMON ELEMENTS



TYP FLOOR PLAN UNIT H

Instrument 670028 Page 18 of 20
Apr 22 09 91

	ARCHITECTURE & ENVIRONMENTAL DESIGN 301 PALAFOX PENINSULA FLORIDA 32501 (850) 432-6911 FAX (850) 432-5000 WWW.HENRYMORRIS.COM	THE PASS A CONDOMINIUM RESORT	JOB NO.: 0988/1 CAD: TFL ORDERMAN: DATE: 08/22/02 REVISIONS:
	SHEET 17 OF 18		Bill Dumas

ALABAMA RECORDS CORPORATION