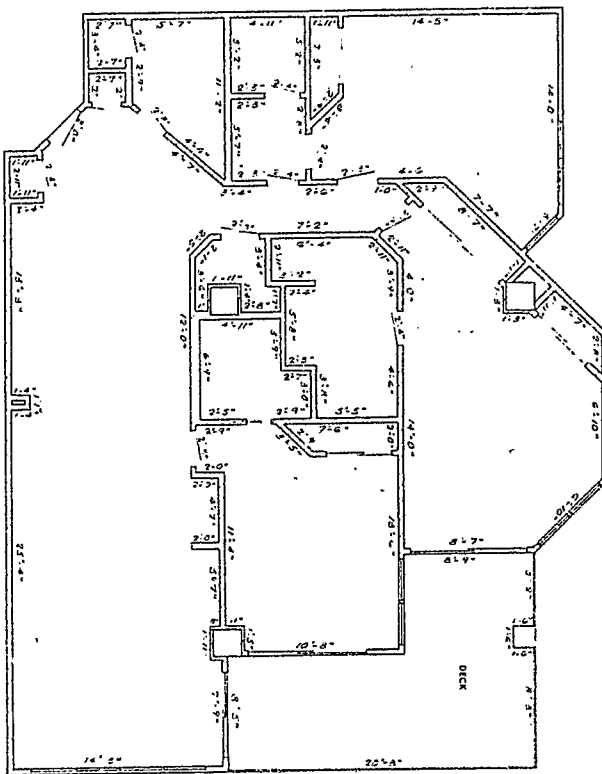


EXHIBIT A  
(Page 5 of 14)

to  
DECLARATION OF CONDOMINIUM  
FOUR SEASONS OF ROMAR BEACH

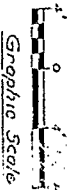


C UNIT

TYPICAL UNITS

SCALE: 1/4" = 1'-0"

MSC. 59 AGE 1417



STATE OF ALABAMA  
COUNTY OF BALDWIN  
I, JAMES F. CHAMBERLAIN, A PROFESSIONAL ENGINEER  
IN THE STATE OF ALABAMA, HEREBY FIRST PRESENT TO SECTION  
24-1-1, CODE OF ALABAMA, 1975, AND SECONDLY, TO SECTION  
24-1-1, CODE OF ALABAMA, 1975, AND THIRDLY, TO SECTION  
24-1-1, CODE OF ALABAMA, 1975, INCLUSIVE ATTACHED TO AND  
HEREBY PART OF THE DECLARATION OF CONDOMINIUM OF FOUR SEASONS  
OF ROMAR BEACH, A CONDOMINIUM, FULLY AND ACCURATELY DEPICT  
THE LAYOUT, LOCATIONS, UNIT DIMENSIONS AND DISPOSITIONS IN SEVERAL  
CLIENTS' DETAILS TO INDICATE THE COMMON ELEMENTS AND PRIVATE ELE-  
MENTS COMPRISING SUCH UNITS OF FOUR SEASONS OF ROMAR BEACH,  
A CONDOMINIUM, AS BUILT.

*James F. Chamberlain*  
JAMES F. CHAMBERLAIN  
DATE: 4-13-87

- CROSS HATCHED AREA  
INDICATES COMMON ELEMENTS.
- NO LIMITED COMMON ELEMENTS
- NON-CROSS HATCHED AREA  
INDICATES PRIVATE ELEMENTS.

PHASE 1  
TYPICAL UNITS

FOUR SEASONS OF ROMAR BEACH	
OWNER	FOUR SEASONS OF ROMAR BEACH, INC.
DESIGNED BY	JAMES F. CHAMBERLAIN, P.E.
DATE	4-13-87
PROJECT NO.	4-13-87
SCALE	1/4" = 1'-0"
DATE	4-13-87
BY	J.F.C.
CHECKED BY	J.F.C.
DATE	4-13-87
PROJECT NO.	4-13-87
SCALE	1/4" = 1'-0"
DATE	4-13-87
BY	J.F.C.
CHECKED BY	J.F.C.
DATE	4-13-87