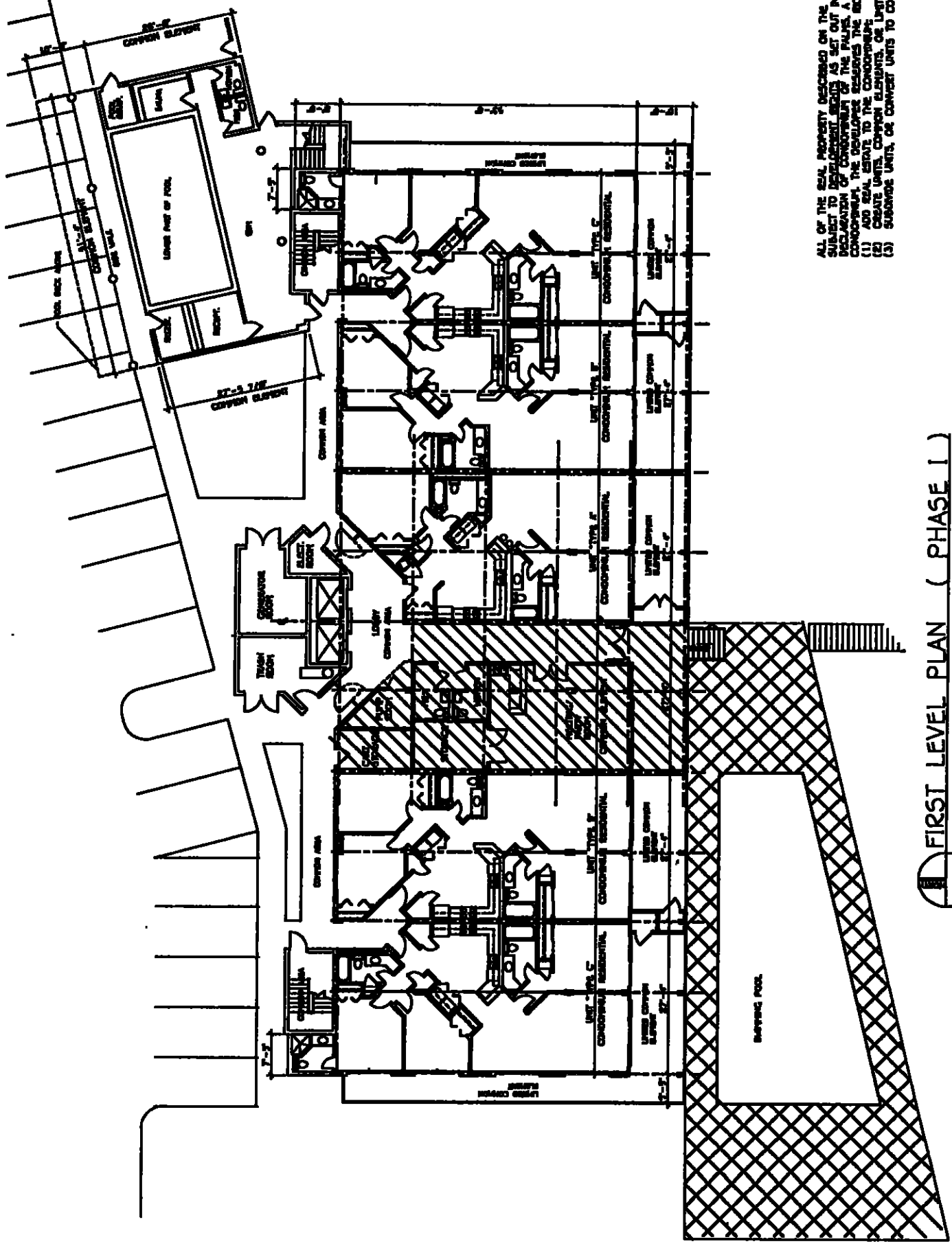


ALL OF THE REAL PROPERTY DESCRIBED ON THE PLANS IS
 SUBJECT TO DEVELOPMENT RIGHTS AS SET OUT IN THE
 DECLARATION OF CONDOMINIUM FOR THE PALMS. A
 CONSEQUENT THE DEVELOPER OF THE PALMS, A
 (1) AND REAL ESTATE BROKER HAS THE RIGHT TO:
 (2) CREATE UNITS, COMMON ELEMENTS, OR LIMITED COMMON ELEMENTS;
 (3) SUBDIVIDE UNITS, OR CONVERT UNITS TO COMMON ELEMENTS.



FIRST LEVEL PLAN (PHASE I)
 SCALE 1/8" = 1'-0"

THE PALMS, A CONDOMINIUM

MIST0055 PAGE 0887