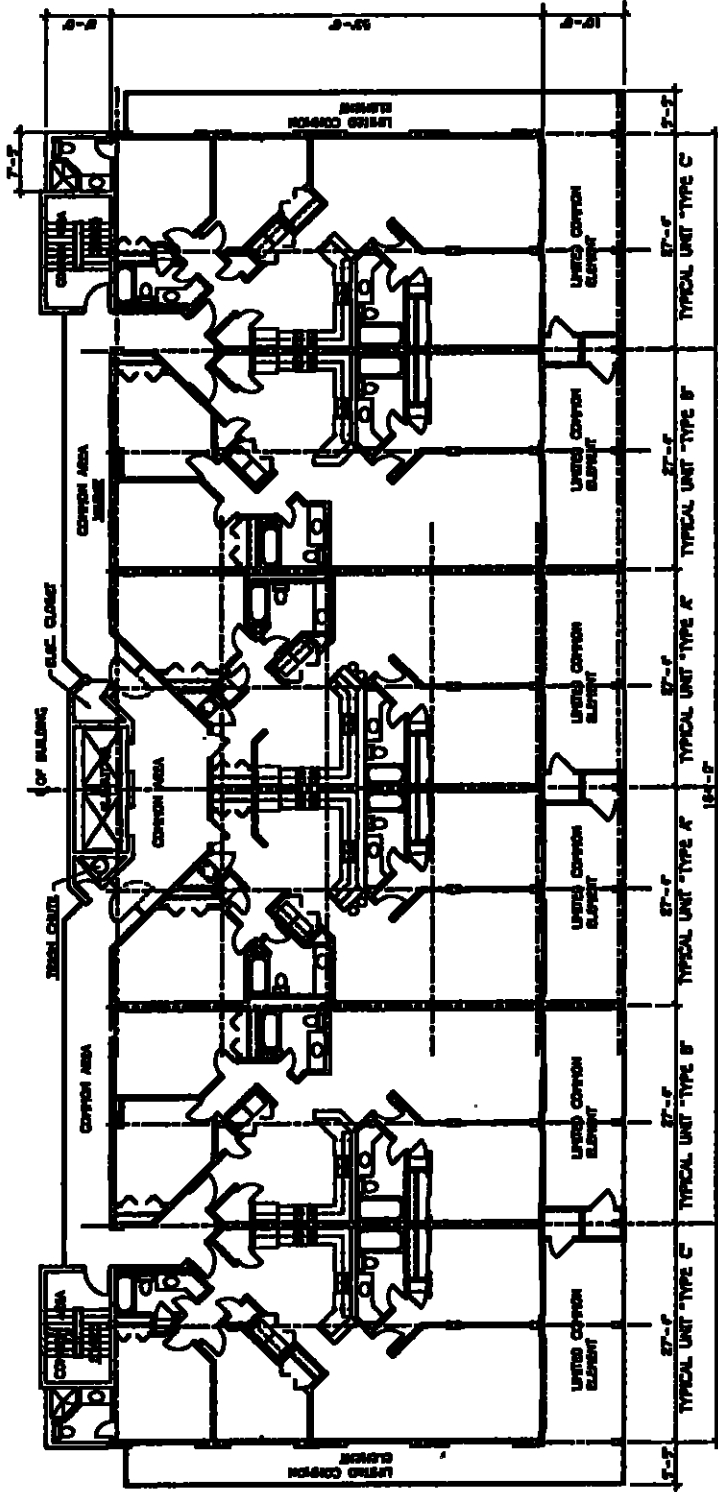


ALL OF THE REAL PROPERTY DESCRIBED ON THIS PLAN IS
 SUBJECT TO DEVELOPMENT RIGHTS AS SET OUT IN THE
 DECLARATION OF CONDOMINIUM OF THE PALMS. A
 CONDOMINIUM IS BEING CREATED BY THIS PLAN.
 CONSEQUENTLY, THE DEVELOPER RESERVES THE RIGHT TO:
 (1) ADD REAL ESTATE TO THE CONDOMINIUM;
 (2) CREATE UNITS, COMMON ELEMENTS, OR LIMITED COMMON ELEMENTS;
 (3) SUBDIVIDE UNITS, OR CONVERT UNITS TO COMMON ELEMENTS.



8th LEVEL FLOOR PLAN PHASE I

SCALE 1/8" = 1'-0"
 THE PALMS, A CONDOMINIUM

NOT SCALE TO THIS PLAN