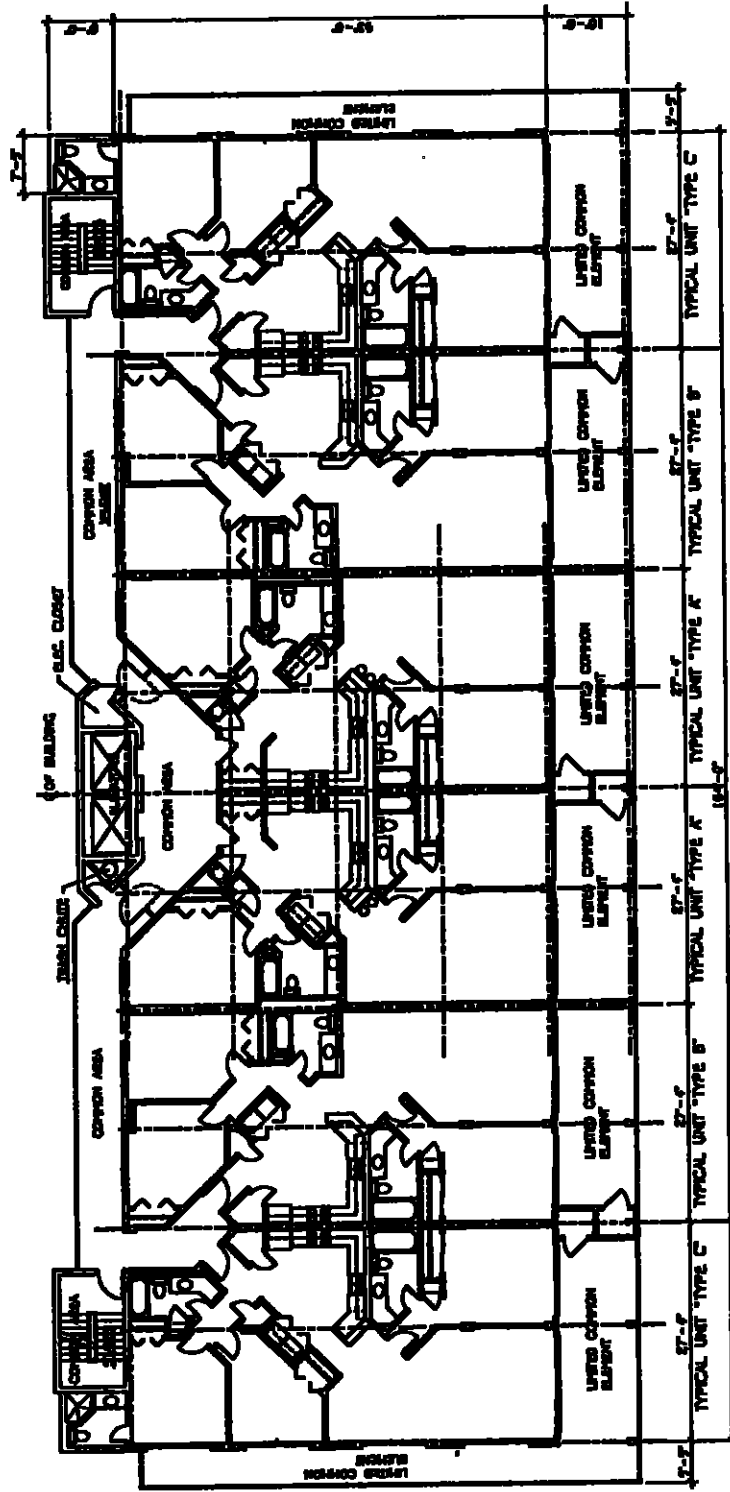


ALL OF THE REAL PROPERTY DESCRIBED ON THE PLANS IS
 SUBJECT TO DEED RESTRICTIONS AS SET OUT IN THE
 DECLARATION OF CONDOMINIUM OF THE PALMS, A
 CONDOMINIUM. THE DEVELOPER RESERVES THE RIGHT TO:
 (1) ADD REAL ESTATE TO THE CONDOMINIUM;
 (2) CREATE UNITS, COMMON ELEMENTS, OR LIMITED COMMON ELEMENTS;
 (3) SUBDIVIDE UNITS, OR CONVERT UNITS TO COMMON ELEMENTS.



4th LEVEL FLOOR PLAN PHASE I

SCALE 1/8" = 1'-0"
 THE PALMS, A CONDOMINIUM

11/11/2011 10:28:11 AM