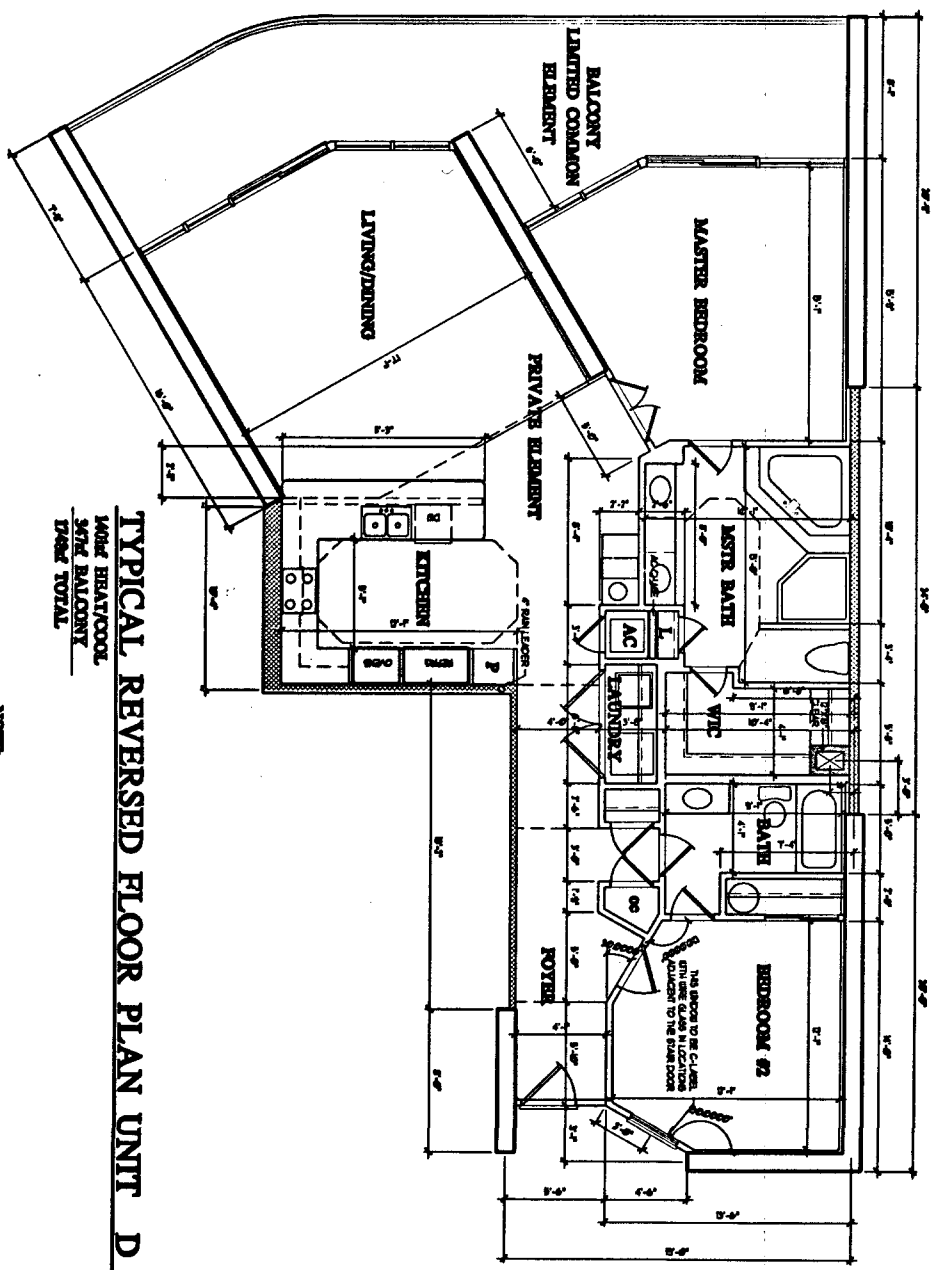


Apr. 22 1962

THE UNDERSIGNED, HENRY MORRIS, A REGISTERED ARCHITECT IN THE STATE OF ALABAMA, REGISTRATION NUMBER 2885, HEREBY CERTIFIES THAT TO THE BEST OF HIS KNOWLEDGE, DRAWINGS CONSISTING OF PAGES 1 THROUGH 32 INCLUSIVE, ATTACHED TO AND MADE PART OF THE DECLARATION OF CONDOMINIUM OF CARIBE RESORT, A CONDOMINIUM, CONTAINS ALL INFORMATION REQUIRED BY SAID SECTION, FULLY AND ACCURATELY DENOTES THE LAYOUT, LOCATIONS, UNIT NUMBERS AND COMMON ELEMENT DIMENSIONS IN SUFFICIENT DETAIL TO IDENTIFY THE COMMON ELEMENTS AND PRIVATE ELEMENTS AND PRIVATE ELEMENTS COMPRISING SUCH UNITS OF SAID RESORT CONDOMINIUM, AS BUILT.

Henry Morris
 ALABAMA REGISTRATION NUMBER 2885 DATE 4/1/62



TYPICAL REVERSED FLOOR PLAN UNIT D
 1406' BRAY/COOD
 3074' BALCONY
 1286' TOTAL

NOTE
 ALL RESIDENTIAL UNIT BALCONIES ARE TO BE LIMITED COMMON ELEMENT.
 ALL RESIDENTIAL UNITS ARE TO BE PRIVATE ELEMENT.
 ALL OTHER AREAS TO BE COMMON ELEMENTS UNLESS OTHERWISE NOTED.

© HENRY MORRIS & ASSOCIATES, INC.



HN

HENRY MORRIS & ASSOC., INC.
 ARCHITECTURE & ENVIRONMENTAL DESIGN

20 N. PALMER
 PRASANTA, FLORIDA 320

602-433-431
 FAX 65-4811

CARIBE RESORT
 ORANGE BEACH, ALABAMA

JOB NO. 090607
 DR. PAUL
 ORDER 1441
 DATE 4/4/62
 REVISIONS

UNIT D REVERSED
 SHEET

32

OF 32